

READY TO FLY

Slowly ($\text{♩} = 44$)

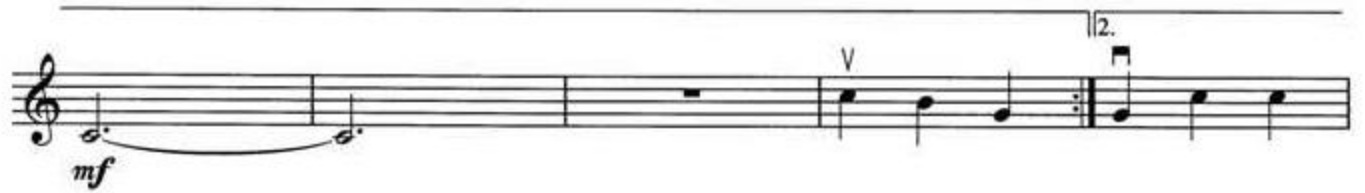
Words and Music by
RICHARD MARX

Verse:

The musical score for the verse consists of six staves of music in 3/4 time. The first staff begins with a treble clef, a key signature of one sharp (F#), and a dynamic marking of *mf*. The melody is written on a single staff with various note values and rests. Vertical lines with a 'V' above them indicate the placement of lyrics. The second staff continues the melody. The third staff continues the melody. The fourth staff continues the melody. The fifth staff continues the melody and ends with the instruction 'To Coda' and a circled cross symbol. The sixth staff continues the melody and ends with a dynamic marking of *f*.

Chorus:

The musical score for the chorus consists of a single staff of music in 3/4 time. The melody is written on a single staff with various note values and rests. Vertical lines with a 'V' above them indicate the placement of lyrics.



⊕ Coda

